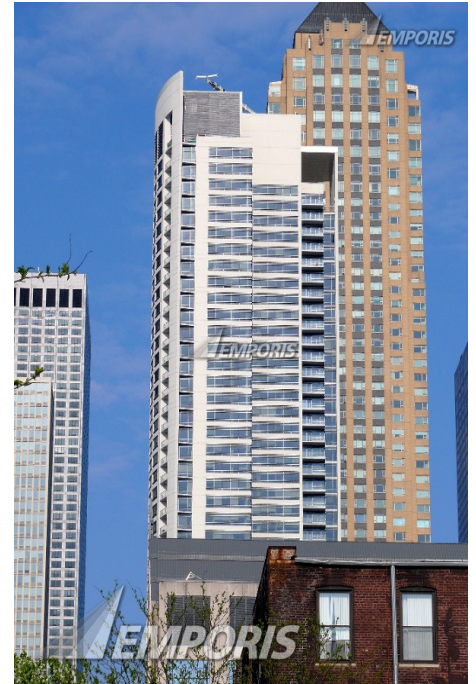
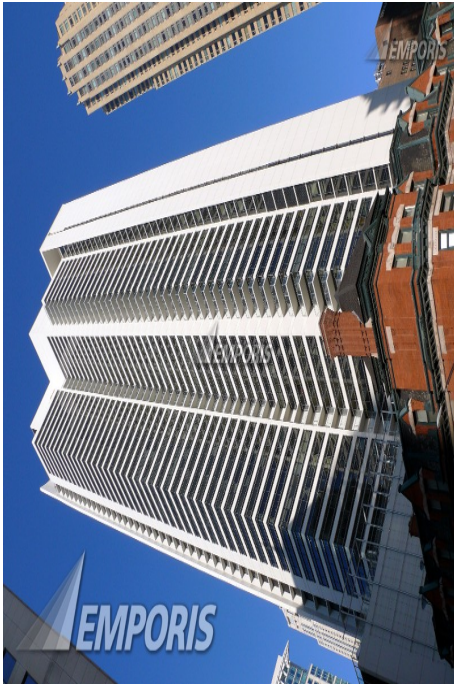


# The Clare at Water Tower



## Identification


<b>EBN</b>	181219
<b>Name</b>	The Clare at Water Tower
<b>Construction Type</b>	skyscraper
<b>Complex Name</b>	Loyola Water Tower Campus
<b>Current Status</b>	existing [completed]

## Location

<b>Continent Name</b>	North America	<b>Postcode</b>	60611
<b>Country Name</b>	U.S.A.	<b>Address (as text)</b>	55 East Pearson Street
<b>State Name</b>	Illinois	<b>Main Address</b>	55 East Pearson Street
<b>Metro Area Name</b>	Chicago-Naperville-Michigan City Combined Statistical Area	<b>Virtual Address</b>	826 North Rush Street 825 North Wabash Avenue

<b>City Name</b>	Chicago	<b>Latitude</b>	<a href="#">Contact us</a>
<b>District (1st level)</b>	Downtown	<b>Longitude</b>	<a href="#">Contact us</a>
<b>District (2nd level)</b>	Near North Side		

## Description

<b>Foundation System</b>	caisson foundation	<b>Facade Color</b>	white
<b>Structural Material</b>	concrete	<b>Architectural style</b>	modernism
<b>Facade System</b>	exposed structure	<b>Main Usage</b>	university  senior living
<b>Facade Material</b>	concrete	<b>Side Usage</b>	parking

## Spatial dimensions

<b>Height (structural)</b>	588.85 ft	<b>Floors (underground)</b>	1
<b>Height (top floor)</b>	533.83 ft	<b>Floors (overground)</b>	52
<b>Height (roof)</b>	588.58 ft	<b>Units</b>	<a href="#">Contact us</a>
<b>Height (floor-floor)</b>	9.84 ft	<b>Parking places</b>	180
<b>Length</b>	114.99 ft	<b>Elevators</b>	7
<b>Width</b>	201.38 ft		

## Years and costs

<b>Year (construction start)</b>	2006	<b>Year (construction end)</b>	2008
----------------------------------	------	--------------------------------	------

## Facts

- The Chicago Plan Commission approved the building on Thursday, July 10th 2003.
- Situated on a trapezoidal lot, the tower curves at the wide angle at Rush and Pearson, and features sawtooth indents on its southwest side.
- The developers contributed \$2.7 million towards a city park at State Street and Chicago Avenue in exchange for permission to build 200,000 square feet more than allowed by zoning.
- Construction of this tower began the same day as OneEleven, on February 22, 2006.
- The building includes 50,000 square feet of classroom space at the bottom to replace two small classroom buildings belonging to Loyola University of Chicago.

## Need additional information? Contact us now!

Phone	+49 40 6094 6494 0	Hamburg	09:00 am - 07:00 pm
Phone	+1 250 483 7089	New York	03:00 am - 01:00 pm
Email	<a href="mailto:sales@emporis.com">sales@emporis.com</a>	Tokyo	04:00 pm - 02:00 am

- The tower looks over Lewis Towers onto Water Tower Park and straight down to Lake Michigan over the Museum of Contemporary Art.
- This is one of the tallest residential buildings reserved for seniors anywhere in the world.

### Involvement companies

Architect.....

**Perkins & Will**

330 North Wabash Avenue  
60611 Chicago  
U.S.A.

Phone +1 312 755 0770  
Fax +1 312 755 0775  
Email

### Additional company data available for this building

<b>Acoustics Consultant</b>	<a href="#">Contact us</a>	<b>General Contractor</b>	<a href="#">Contact us</a>
<b>Civil Engineering</b>	<a href="#">Contact us</a>	<b>Interior Designer</b>	<a href="#">Contact us</a>
<b>Client</b>	<a href="#">Contact us</a>	<b>Landscape Architect</b>	<a href="#">Contact us</a>
<b>Concrete Supplier</b>	<a href="#">Contact us</a>	<b>Mechanical Engineering</b>	<a href="#">Contact us</a>
<b>Developer</b>	<a href="#">Contact us</a>	<b>Property Management</b>	<a href="#">Contact us</a>
<b>Electrical Connections</b>	<a href="#">Contact us</a>	<b>Real Estate Agent</b>	<a href="#">Contact us</a>
<b>Excavation Company</b>	<a href="#">Contact us</a>	<b>Shell Construction</b>	<a href="#">Contact us</a>
<b>Facade Maintenance System Supplier</b>	<a href="#">Contact us</a>	<b>Structural Engineering</b>	<a href="#">Contact us</a>
<b>Financing</b>	<a href="#">Contact us</a>	<b>Window Frame Supplier</b>	<a href="#">Contact us</a>
<b>Foundation Company</b>	<a href="#">Contact us</a>		

### Need additional information? Contact us now!

Phone	+49 40 6094 6494 0	Hamburg	09:00 am - 07:00 pm
Phone	+1 250 483 7089	New York	03:00 am - 01:00 pm
Email	sales@emporis.com	Tokyo	04:00 pm - 02:00 am

# Get Emporis Research today and benefit from our worldwide database now!



## Analyze buildings, construction markets, regions and competitors

- 450,000 buildings from a wide range of categories such as residential, office, retail, hospitality and many more
- Choose from a broad range of regional data packages – or create your own
- Powerful and fast search for in-depth analysis
- Detailed search queries in over 50 data fields, e.g. filter by location, size, status, building usage and construction types
- Generate customized lists of construction projects and involved companies

## Generate leads and explore new business opportunities

- Get contact information for over 160,000 companies
- Search for companies related to specific construction projects or generate lists according to particular fields of activity
- Find new clients and business partners or connect with key players in new markets
- Forecast trends and future market growth
- Spend less time researching, and more time doing business



## Keep up to date and ahead of your competitors

- Get constantly-reviewed data from around the globe
- 24/7 access to the database from anywhere in the world
- View detailed information about existing buildings as well as those planned and under construction
- Save your searches for easy future reference
- Receive email notifications about new content fitting your criteria

## Download data and put it to work

- Export information easily to CSV/Excel files
- Individually select data fields for your specific needs
- Integrate the data into your own internal system
- Provide your staff with actionable data
- Benefit from limitless downloads within your chosen package



## Need additional information? Contact us now!

Phone +49 40 6094 6494 0  
Phone +1 250 483 7089  
Email [sales@emporis.com](mailto:sales@emporis.com)

Hamburg  
New York  
Tokyo

09:00 am - 07:00 pm  
03:00 am - 01:00 pm  
04:00 pm - 02:00 am