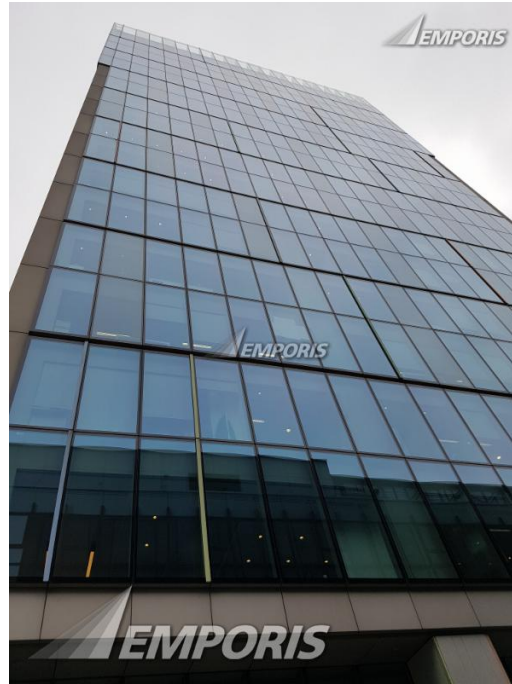


# Dashwood



## Identification

<b>EBN</b>	135911
<b>Name</b>	Dashwood
<b>Alternative Name</b>	Dashwood House
<b>Construction Type</b>	high-rise building
<b>Current Status</b>	existing [completed]

## Location

<b>Continent Name</b>	Europe	<b>Postcode</b>	EC2
<b>Country Name</b>	United Kingdom	<b>Address (as text)</b>	69 Old Broad Street
<b>State Name</b>	England	<b>Main Address</b>	69 Old Broad Street
<b>Metro Area Name</b>	London Metro Area	<b>Latitude</b>	<a href="#">Contact us</a>
<b>City Name</b>	London	<b>Longitude</b>	<a href="#">Contact us</a>

**District (1st level)** City of London

### Description

<b>Facade System</b>	curtain wall	<b>Main Usage</b>	commercial office
<b>Architectural style</b>	international style		

### Spatial dimensions

<b>Height (structural)</b>	240.91 ft	<b>Floors (overground)</b>	19
<b>Height (tip)</b>	240.91 ft	<b>Gross Floor Area (GFA)</b>	<a href="#">Contact us</a>
<b>Floors (underground)</b>	1		

### Years and costs

<b>Year (construction start)</b>	1973	<b>Year (last renovation)</b>	2008
<b>Year (construction end)</b>	1976		

### Features & Amenities

- Elevator destination control

### Facts

- The previous top two mechanical floors were demolished and replaced with office accommodation.
- When completed in 1976, Dashwood House had 16 storeys and measured 63.32m tall, with a total floorspace of 17,409sq m.
- The interior is protected from direct sunlight through the application of silk-screened dot matrix fritting to the replacement high performance glass curtain wall.
- Dashwood (formerly Dashwood House) is named after the Alderman, Francis Dashwood (1658), whose house originally occupied this site.
- The replacement unitized curtain wall incorporates smoke vents.
- The building achieves a BREEAM rating of 'excellent'.
- Prior to reconstruction, the building was clad in pinkish granite.

### Need additional information? Contact us now!

Phone	+49 40 6094 6494 0	Hamburg	09:00 am - 07:00 pm
Phone	+1 250 483 7089	New York	03:00 am - 01:00 pm
Email	<a href="mailto:sales@emporis.com">sales@emporis.com</a>	Tokyo	04:00 pm - 02:00 am

- In October 2006, planning permission was granted to refurbish Dashwood House and provide an additional 3 floors of accommodation. The scheme took the total height to 19 storeys (73.43 meters), with a total floor area of 21,154 square meters.
- In total, the building is clad with around 1,600 panels covering an area of roughly 9,700 square metres.

## Involved companies

### Architect.....

**Fletcher Priest Architects Ltd.**

Middlesex House, 34-42 Cleveland Street  
W1T 4JE London  
United Kingdom

Phone +44 (0) 20 7034 2200  
Fax +44 (0) 20 7637 5347  
Email london@fletcherpriest.com

**YRM Limited**

58 Bartholomew Close  
EC1A 7YR London  
United Kingdom

Phone +44 20 7600 8118  
Fax +44 20 7600 8119  
Email yrm@yrm.co.uk

### Glass Supplier.....

**Interpane Glas Industrie AG**

Sohnreystrasse 21  
37697 Lauenförde  
Germany

Phone +49 5273 809 0  
Fax +49 5273 809 238  
Email ag@interpane.com

### Sealants & Adhesives Supplier.....

**Sika Services AG**

Tüffenwies 16  
8048 Zürich  
Switzerland

Phone +41 58 436 40 40  
Fax +41 58 436 55 30

## Additional company data available for this building

<b>Developer</b>	<a href="#">Contact us</a>	<b>Project Management</b>	<a href="#">Contact us</a>
<b>Electrical Engineering</b>	<a href="#">Contact us</a>	<b>Quantity Surveyor</b>	<a href="#">Contact us</a>
<b>Elevator Supplier</b>	<a href="#">Contact us</a>	<b>Real Estate Agent</b>	<a href="#">Contact us</a>
<b>Facade Supplier</b>	<a href="#">Contact us</a>	<b>Structural Engineering</b>	<a href="#">Contact us</a>
<b>General Contractor</b>	<a href="#">Contact us</a>	<b>Surveyor</b>	<a href="#">Contact us</a>
<b>Mechanical Engineering</b>	<a href="#">Contact us</a>	<b>Sustainable Design Consultant</b>	<a href="#">Contact us</a>

### Need additional information? Contact us now!

Phone	+49 40 6094 6494 0	Hamburg	09:00 am - 07:00 pm
Phone	+1 250 483 7089	New York	03:00 am - 01:00 pm
Email	sales@emporis.com	Tokyo	04:00 pm - 02:00 am

Owner

[Contact us](#)

### Need additional information? Contact us now!

Phone

**+49 40 6094 6494 0**

Hamburg

09:00 am - 07:00 pm

Phone

**+1 250 483 7089**

New York

03:00 am - 01:00 pm

Email

**[sales@emporis.com](mailto:sales@emporis.com)**

Tokyo

04:00 pm - 02:00 am

# Get Emporis Research today and benefit from our worldwide database now!



## Analyze buildings, construction markets, regions and competitors

- 450,000 buildings from a wide range of categories such as residential, office, retail, hospitality and many more
- Choose from a broad range of regional data packages – or create your own
- Powerful and fast search for in-depth analysis
- Detailed search queries in over 50 data fields, e.g. filter by location, size, status, building usage and construction types
- Generate customized lists of construction projects and involved companies

## Generate leads and explore new business opportunities

- Get contact information for over 160,000 companies
- Search for companies related to specific construction projects or generate lists according to particular fields of activity
- Find new clients and business partners or connect with key players in new markets
- Forecast trends and future market growth
- Spend less time researching, and more time doing business



## Keep up to date and ahead of your competitors

- Get constantly-reviewed data from around the globe
- 24/7 access to the database from anywhere in the world
- View detailed information about existing buildings as well as those planned and under construction
- Save your searches for easy future reference
- Receive email notifications about new content fitting your criteria

## Download data and put it to work

- Export information easily to CSV/Excel files
- Individually select data fields for your specific needs
- Integrate the data into your own internal system
- Provide your staff with actionable data
- Benefit from limitless downloads within your chosen package



## Need additional information? Contact us now!

Phone +49 40 6094 6494 0  
Phone +1 250 483 7089  
Email [sales@emporis.com](mailto:sales@emporis.com)

Hamburg  
New York  
Tokyo

09:00 am - 07:00 pm  
03:00 am - 01:00 pm  
04:00 pm - 02:00 am